



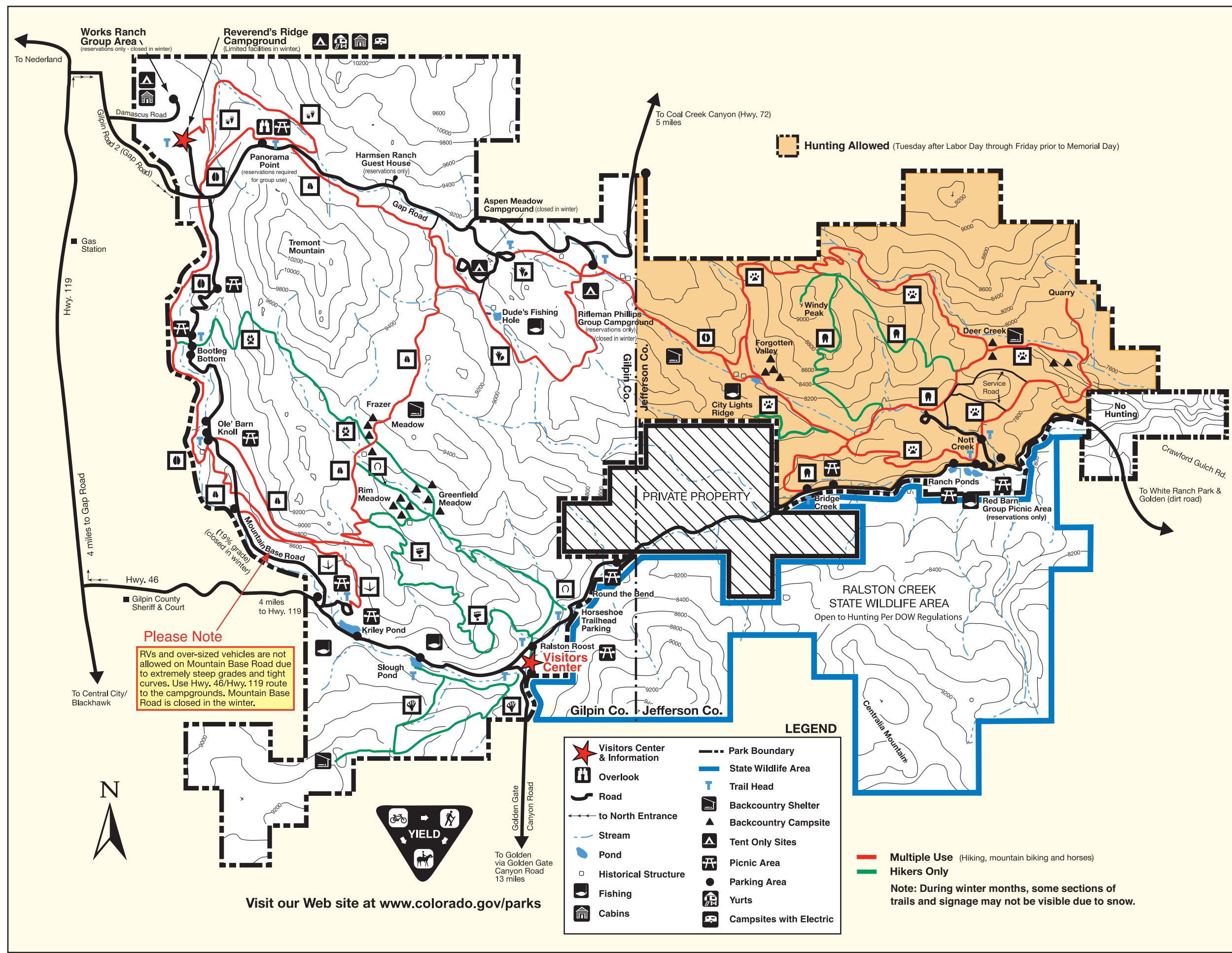
Colorado State Parks

GOLDEN GATE CANYON

Trails

	Beaver - Most Difficult Start: Visitor Center End: Visitor Center	2.5 mi.
	Black Bear - Most Difficult Start: Ralston Roost Trailhead End: Mule Deer Trail	2.8 mi.
	Blue Grouse - Moderate Start: Kriley Pond End: Intersection with Mule Deer Trail	0.7 mi.
	Buffalo - Moderate Start: Rifleman Phillips End: Forgotten Valley	1.2 mi.
	Burro - Difficult Start: Bridge Creek End: Bridge Creek	4.5 mi.
	Coyote - Most Difficult Start: Bootleg Bottom End: Frazer Meadow	2.0 mi.
	Elk - Moderate Start: Ole' Barn Knoll End: Intersection with Raccoon Trail	2.2 mi.
	Horseshoe - Moderate Start: Horseshoe Trailhead End: Frazer Meadow	1.8 mi.
	Mountain Lion - Difficult Start: Nott Creek End: Nott Creek	6.7 mi.
	Mule Deer - Moderate Start: Ole' Barn Knoll End: Panorama Point	5.2 mi.
	Raccoon - Moderate Start: Reverend's Ridge End: Reverend's Ridge via Panorama Point	2.5 mi.
	Snowshoe Hare - Difficult Start: Aspen Meadow End: Aspen Meadow	3.0 mi.

Hunting Allowed (Tuesday after Labor Day through Friday prior to Memorial Day)



Please Note
RVs and over-sized vehicles are not allowed on Mountain Base Road due to extremely steep grades and tight curves. Use Hwy. 46/Hwy. 119 route to the campgrounds. Mountain Base Road is closed in the winter.

LEGEND

Visitors Center & Information	Park Boundary
Overlook	State Wildlife Area
Road	Trail Head
to North Entrance	Backcountry Shelter
Stream	Backcountry Campsite
Pond	Tent Only Sites
Historical Structure	Picnic Area
Fishing	Parking Area
Cabins	Yurts
	Campsites with Electric

Multiple Use (Hiking, mountain biking and horses)
Hikers Only
 Note: During winter months, some sections of trails and signage may not be visible due to snow.

Visit our Web site at www.colorado.gov/parks